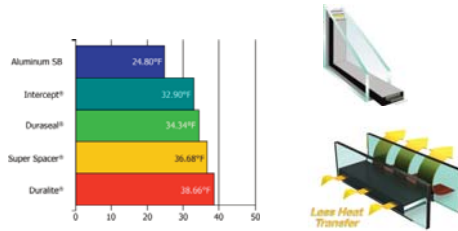


# COMFORT IN YOUR OWN HOME

We enhance your comfort by using the technology of the Duralite® Warm-edge Spacer in the insulated glass. Windows built with Duralite reduce heat transfer and improve the temperature of your inside window glass. Regardless of the season, home comfort begins with windows built with Duralite Warm-edge Spacer.

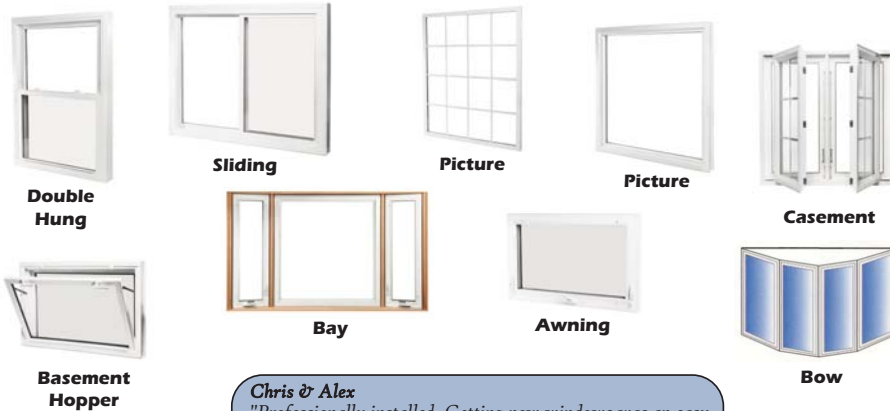
When it comes to windows, you have many choices in colors, interior finishes, hardware and glass. Most glass options also have a variety of different spacer choices that can make a real difference in performance and comfort.

The warmer the glass edge, the less energy lost and the more comfortable you feel near your window. Duralite reduces condensation, increases thermal performance, and improves total U-Value.



Above chart shows edge of glass temperatures and is based off NFRC 100-2001 testing whereby the interior temperature is 70° F and the exterior temperature is 0° F.

## Double Hung Sliding Picture Casement Awning Bay



**Chris & Alex**  
*"Professionally installed. Getting new windows was an easy decision once we saw the energy savings. Thank you."*



National Vinyl LLC • 7 Coburn Street • Chicopee, MA 01013 • 413-420-0548 • www.NVPwindows.com



©2015 National Vinyl LLC. #NV-NWIII-5-15  
 Core® is a registered trademark of Chelsea Building Products  
 Duralite® is a registered trademark of Quanex.

# Northwind III

## ENERGY ADVANTAGE

*A BEAUTIFUL LIFE – FROM EVERY POINT OF VIEW*



**Beauty Quality Comfort Longevity Strength Performance**

# THE ENERGY ADVANTAGE

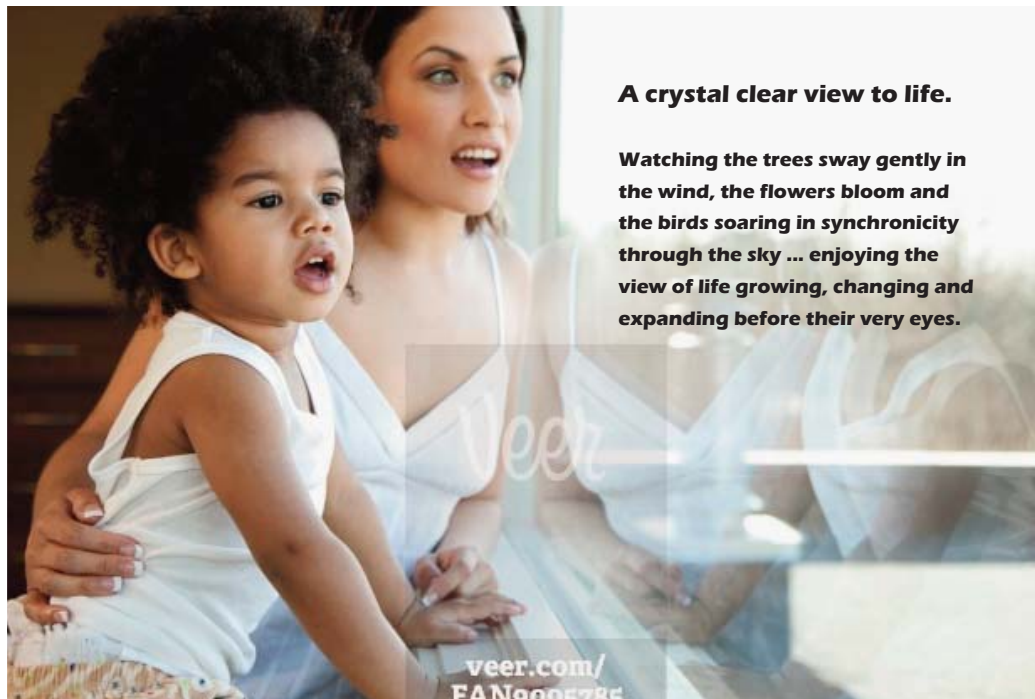
If you are looking for an energy saving double hung, sliding, picture, hopper, casement and/or awning window, our **Northwind III Energy Advantage** Series are a great choice. Our window products easily meet and can exceed the Energy Star requirements for thermal tests.

National Vinyl's **Northwind III Energy Advantage** Series fusion welded windows are virtually maintenance free, designed for smooth and effortless operation and will provide you with long lasting beauty for years to come. The **Northwind III Energy Advantage** Series Replacement and remodeling product line is available only through authorized National Vinyl dealers and are typically installed by a contractor or remodeler.

Our **Northwind III Energy Advantage** Series windows come with National Vinyl's Limited Lifetime Warranty and Satisfaction Guarantee! Contact National Vinyl for more information or to learn about purchasing the **Northwind III Energy Advantage** Series windows.



**A Beautiful Life  
~  
From Every Point  
of View**



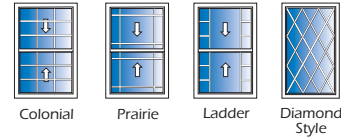
**A crystal clear view to life.**

**Watching the trees sway gently in the wind, the flowers bloom and the birds soaring in synchronicity through the sky ... enjoying the view of life growing, changing and expanding before their very eyes.**

veer.com/  
FAN9005785

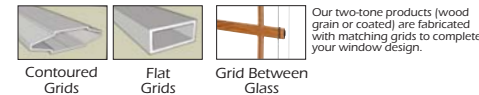
# ENTERING A HOME YOU LOVE

## Grid Styles



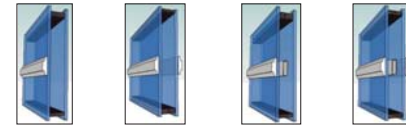
## Grid Between Glass (GBG)

Grids can be between glass for effortless cleaning or SDL (Simulated Divided Lite) for a more true "wood" or traditional colonial look. GBG (Grid Between Glass) mimics a more authentic colonial look. We match interior and exterior colors on grids.



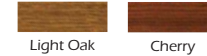
Our two-tone products (wood grain or coated) are fabricated with matching grids to complete your window design.

## Simulated Divided Lite (SDL)



Exterior or Interior SDL only  
Exterior and Interior SDL only  
Exterior or Interior SDL with GBG  
Exterior and Interior SDL with GBG

## Wood Grain Interior Laminates



## Wood Grain Interior Stains



Dark Golden Oak Base 7863 with Dark Mahogany Stain 9573  
Dark Golden Oak Base 7863 with Walnut Stain 9574  
Dark Golden Oak Base 7863 with Mahogany Stain 9509  
Beige Base 7600 with Walnut Stain 9574  
Natural Base 7601 with Cherry Stain 9571

These printed color swatches do not match the actual stain. **Please ask for an actual sample for best color matching.** Note: Your approval of a physical color sample from our window factory is required prior to production.

**Brian & Samantha**

"I am so glad we opted for Low E glass. I had no idea how many things had faded due to the sun. I love how easy our new window are to clean too!"

## STAYING AHEAD OF THE COMPETITION

Our technologically advanced window is inherently thermally efficient without costly upgrades.

In order for the competition to match our product features and to meet the new Energy Star requirements, they have to make major modifications or additions. Including:

- The competition needs to use foam fill which adds costs and weight to the window.
- The competition may require that you invest in very expensive insulated glass units.
- The competition may include an expensive upcharge to use krypton gas within in the insulated glass unit.
- The competition may require the unit to be triple glazed, or triple glazed and foam filled. Costlier and puts more stress on unit due to weight.
- The competition may suggest the use of a complex Low-E coatings to achieve the Energy Star rating which can cause darker glass with lower emissivity values.

Let us show you the science behind saving you dollars and increasing your energy savings.

**BEST PERFORMANCE, NO ADDED COSTS, NO EXTRA FOAM FILLING, NO DARK GLASS, NO TRIPLE GLAZING.....JUST GREAT LONG LASTING PERFORMANCE**



# PERSONALIZING YOUR HOME

**Your home.** It's where you and your family begin each day – and the place you look forward to retreating each night. It provides your family with security and peace of mind. Your home is a reflection of who you are. Technological advances in vinyl window manufacturing have made them one of the smartest choices to improve a home's energy efficiency. Plus they bring beauty and elegance to your home's appearance.

The **Northwind III Energy Advantage** provides you with a professionally crafted window. It combines the beauty of a classically designed window with the performance that meets or exceeds today's tough energy standards. Built from the finest materials, the **Northwind III Energy Advantage** allows you to create nearly limitless possibilities when you take advantage of our special grid and color options. We put the flexibility to match the unique decor of your home in your hands.

**We are committed to meeting and exceeding your expectations by providing high quality products, unparalleled customer service, and support.**

## Available Colors

Your color options are virtually limitless with our Custom Matching Service. Present us with a color swatch to match and we'll do the rest! One time color match cost applies. Standard colors shown. **Ask for an actual sample for best color matching.** Our standard stocked colors include White, Desert Sand, Cocoa Brown and Bronze. Available for exterior, interior or both.

### Solid Vinyl Window Colors



### Custom Painted Window Colors



\*Can be custom painted. \*\*Lineal inventoried for normal lead-time production, exterior only.

### Bob & Terry

"We noticed an improvement in how the windows reduced the amount of noise coming into our house right away."



# LIFETIME WARRANTY

## The National Vinyl LLC Fully Transferable Lifetime Limited Warranty

We proudly provide each of our **Northwind III Energy Advantage** Series windows with one of the strongest warranties in the industry. With a lifetime limited warranty on vinyl, all moveable parts, as well as glass (in case of seal failure), you can be confident in your National Vinyl LLC window purchase.

Our National Vinyl LLC Lifetime Limited Warranty is fully transferable, which means it can be transferred to your home's new owner if you decide to move. This is advantageous when selling your home or condo.

Please review our Lifetime Limited Warranty for exact details.



### Kim & John

"The installers came and had all ten of our windows installed the same day. It looks so beautiful! We love it. Our house looks new!"



# HISTORY OF QUALITY & LONGEVITY

National Vinyl LLC was founded with the simple premise to make the best windows at a fair price and provide the best value and service in the industry. National Vinyl's owners bring well over 50 years of fenestration experience to the company.

The founders, Ben Sumner and Stephen Fellers, became partners in 1963. In 1978, they started building interior storm panels. When they saw the energy savings that vinyl windows could bring to the homeowner, it was an easy decision to add this innovative product line to National Vinyl's offerings in 1984.

Today, with over 100 years of combined window manufacturing and management experience, National Vinyl is the premier choice for Northeastern homeowners. Our windows are manufactured with a slim profile to let in more natural light, insulated glass technology for the highest energy efficiency ratings, and fusion welded frames and sashes for durability.

All of us at National Vinyl thank you for the opportunity to provide quality windows and doors in your home. The decision to upgrade your windows and doors only needs made once. We are confident you will be completely satisfied with your decision to use National Vinyl's products in your home.



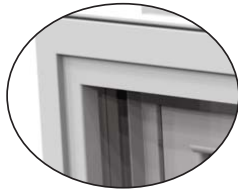
# DURABLE & LONG LASTING

Energy Star® promotes standards in energy efficient products. As Energy Star Partners, our windows are rated according to procedures established by the National Fenestration Rating Council (NFRC) which is a nonprofit organization for the fenestration industry. We are NFRC Certified! Through continued technological advances in window design, we have engineered our windows to meet or exceed NFRC's stringent test standards without expensive upgrades. We meet and surpass even their minimum test results without expensive foam and krypton gas. Our windows utilize the most advanced thermal insulated glass spacer and take advantage of the insulating properties of a multi-chambered sash and frame design. Even our Ccore® structural reinforcements are thermally efficient. We utilize scientifically engineered PVC composite reinforcements for strength and durability.

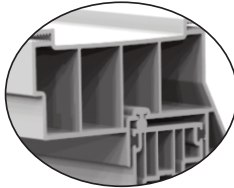
*We strive to bring you the strongest and most energy efficient products to keep you comfortable in your home.*



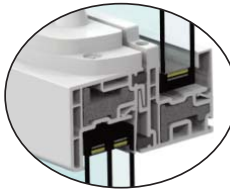
Comes with an Aluminum 1/2 screen with fiber glass screen mesh (not shown)



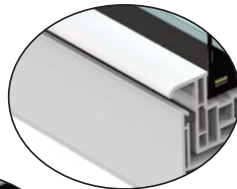
Fusion welded frame and sash – provide structural integrity and durability



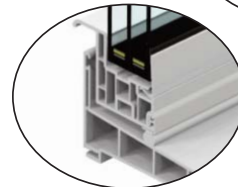
Multi-chambered hollows in frame and sash – engineered to create vastly increased thermal insulating values to meet Energy Star's requirements. Bonus, it also increases the structural value of the window!



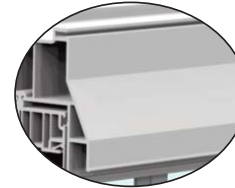
Fully weatherstripped sashes provide unequalled protection against air infiltration and increases thermal values



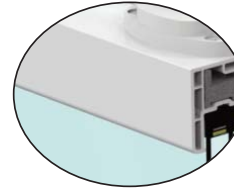
One-piece lift rail top and bottom



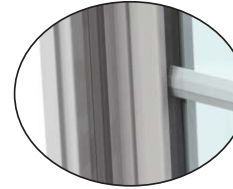
Superior bulb seal where sash meets sill. This creates the best protection against air and water infiltration for greater peace of mind



Decorative beveled exterior – captures that classic look which complements every home



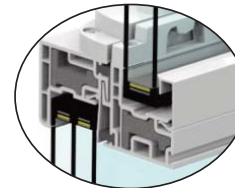
Beautiful soft bevel on sash – provides a more elegant and traditional look



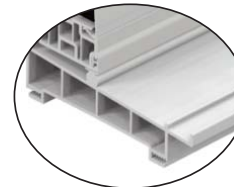
Slim profile – allows for maximum glass area letting more light in to your home



Heavy-duty block and tackle balance system – provides years of easy sash operation



Fully reinforced meeting rails – for structural integrity and lock longevity utilizing thermally efficient Ccore® structural composite reinforcement.



True sloped sill design provides optimal water run-off eliminating water entry into home

## Energy Star Performance Ratings

Choose our Soft Coat Low E 3/4" insulated dual pane glass with argon gas fill and Ccore® reinforcement for strength.  
NOTE: To reach Energy Star Ratings, NO foam, NO krypton gas or triple glazing is necessary. The thermal efficiency is built right into the window!

**Double Hung Window**  
U-Value: 0.27  
Solar Heat Gain (SHGC): 0.28  
Visual Transmittance (VT): 0.52  
Condensation Resistance (CR): 62.0

All window styles meet Energy Star. Rating results may vary by window style.



## R5 Most Efficient

For the most efficient window, choose our Soft Coat Dual Low E 1" insulated triple pane glass with argon gas fill and Ccore® reinforcement for strength.  
NOTE: Goes beyond Energy Star Ratings, NO foam, NO krypton gas. The thermal efficiency is already built right into the window, this enhanced glass package surpasses it!

**Double Hung Window**  
U-Value: 0.20  
Solar Heat Gain (SHGC): 0.21  
Visual Transmittance (VT): 0.34  
Condensation Resistance (CR): 73.0

All window styles meet Energy Star. Rating results may vary by window style.